

2023

TOOLBOX

LIST OF RESOURCES



PREPARED BY:

edb | **ECONOMIC
DEVELOPMENT
BOARD** TACOMA
PIERCE COUNTY

Meet Our Team



Bruce Kendall

President & CEO
Bruce@edbtacomapierce.org



Deborah Kelly

Director of Operations
Deborah@edbtacomapierce.org



Tamsin Bell

VP, Business Development
Tamsin@edbtacomapierce.org



Sarah Bonds

VP, Business Recruitment
Sarah@edbtacomapierce.org

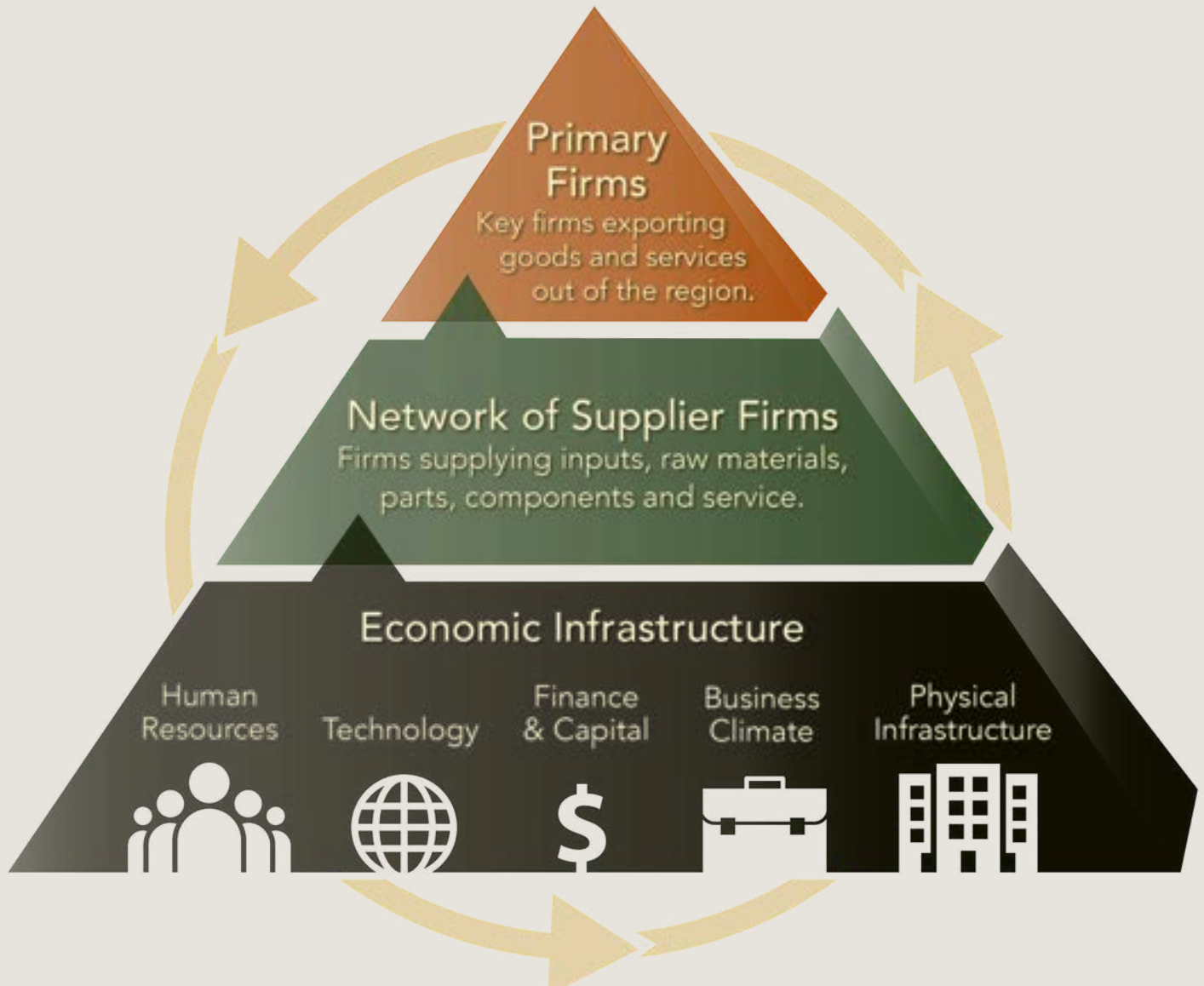


Maddie Merton

VP, Business Retention
& Expansion
Maddie@edbtacomapierce.org



Growing Great Jobs



Locate or expand a business in Pierce county

SITE SELECTION ASSISTANCE

The EDB works directly with businesses and consultants to provide key information and assistance to recruit primary employers in incorporated and unincorporated areas of Pierce County. For information on how we can help with your development project, contact Sarah Bonds at 253.284.5892 or sarah@edbtacomapierce.org.

BUSINESS RETENTION & EXPANSON

The EDB works directly with existing primary businesses to help them grow and expand in Pierce County. For assistance navigating incentives, financing programs, permitting, and for referrals to workforce training partners and other resources, contact Maddie Merton at 253.317.1903 or maddie@edbtacomapierce.org.

CLUSTER TEAM DEVELOPMENT

Tacoma-Pierce County's cluster teams focus on our region's key industries of Aerospace, Healthcare, Logistics and Technology. Clusters are geographically specific groups of interconnected companies. By clustering near each other, businesses can increase their productivity, accelerate innovation and stimulate new business formation. For more information, contact Tamsin Bell at 253.284.5889 or tamsin@edbtacomapierce.org.

INVESTPIERCECOUNTY.COM

Visit InvestPierceCounty.com to explore Pierce County's available commercial properties. For more information, please contact Sarah Bonds at 253.284.5892 or sarah@edbtacomapierce.org.

PERMITTING ASSISTANCE FOR CITY OF TACOMA

The City of Tacoma's Planning and Development Services Department is here to help you understand what permits are required and how to apply for them. Please visit Tacomapermits.org for more information. In-person, virtual or chat appointments are available.

PERMITTING ASSISTANCE FOR UNINCORPORATED PIERCE COUNTY

Pierce County's Economic Development Department offers assistance to businesses in unincorporated areas struggling with permit issues or needing permits to expand. For more information, contact Kevin Clegg at 253.798.6639 or kclegg@co.pierce.wa.us.

TACOMA PUBLIC UTILITIES

Tacoma Public Utilities offers assistance to businesses that are considering locating or expanding or looking for opportunities to lower their energy and water costs. For more information, contact Michael Catsi at 253.441.4574 or mcatsi@ci.tacoma.wa.us.

Globally connected by air, rail, water and road

SEA-TAC AIRPORT

Seattle-Tacoma International Airport, also referred to as Sea-Tac Airport, is the primary commercial airport serving the Puget Sound Region. Sea-Tac is a hub and international gateway to Asia and Europe. For more information, contact the EDB at 253.383.4726.

PORT OF TACOMA

The Port of Tacoma is a major seaport and top 10 U.S. container port. Its strategic location in the northwest corner of the U.S. and focus on efficiency and reliability puts it among the largest container ports in North America. It is a major center for autos, bulk, break-bulk, and heavy-lift cargoes. For more information, contact the Northwest Seaport Alliance at 800.657.9808 or info@nwseaportalliance.com.

BURLINGTON NORTHERN SANTE FE RAILWAY

BNSF Railway, a Class 1 railroad, connects Tacoma-Pierce County to key distribution points across North America.

UNION PACIFIC RAILWAY

Union Pacific, a Class 1 railroad, connects Tacoma-Pierce County to key distribution points across North America.

TACOMA RAIL

Tacoma Rail, a Class III railroad, provides freight switching rail services serving the Port of Tacoma, Frederickson, south Pierce County and parts of Thurston County. For more information, contact Dale King at 253.502.8894 or dwking@ci.tacoma.wa.us.

WA STATE DEPARTMENT OF TRANSPORTATION

WSDOT constructs, maintains, and regulates the use of the state's transportation infrastructure.

PIERCE TRANSIT

Pierce Transit provides outreach to employers to assist in providing vanpool, van share, transit, and other trip reduction services. For more information, contact Sharon Stockwell at 253.581.8112 or sstockwell@piercetransit.org.

SOUND TRANSIT

Sound Transit plans, builds and operates express bus, light rail and commuter train services. For more information, contact Wilbert Santos at 206.370.5516 or wilbert.santos@soundtransit.org.



Reduce your overall cost of doing business in Pierce County

IMPACT WASHINGTON

Impact Washington is a non-profit organization that strengthens Washington manufacturers to make them more globally competitive. Impact Washington offers a variety of services, including consulting regarding lean manufacturing and plant layout, among other things. Impact Washington's services are fee-based, but they provide a free initial consultation. For more information, contact Joseph Gosar at 253.604.8406 or jgosar@impactwashington.org.

PUGET SOUND ENERGY

You can lower your business's energy bills with PSE's commercial energy management programs. They can help you identify low-cost/no-cost operations and maintenance upgrades, with incentives that can cover some or all of your implementation costs. For more information, contact Christine Nhan at 253.229.0953 or Christine.Nhan@pse.com

PIERCE COUNTY TRAFFIC IMPACT FEE EXEMPTION

Pierce County offers 100% exemptions to their Traffic Impact Fee for three specific uses in unincorporated regions of the county. Eligible facilities include manufacturing, corporate headquarters, and R&D centers. For more information, contact Kevin Clegg at 253.798.6639 or kclegg@co.pierce.wa.us.

WASHINGTON STATE MACHINERY AND EQUIPMENT (M&E) SALES/USE TAX EXEMPTION

Exemption on sales/use tax on machinery and equipment used directly in manufacturing or research (for manufacturers, processors for hire, or manufacturers who perform R&D).

WASHINGTON STATE WAREHOUSE TAX INCENTIVE

Refund of the state's portion of the sales/use tax paid on new warehouse construction or expansion that is 200,000 square feet or greater. There is a 50% refund of state's portion of sales/use tax paid on material handling and racking equipment in the warehouse.

WASHINGTON STATE HIGH EMPLOYMENT SALES/USE TAX DEFERRAL FOR MANUFACTURING FACILITIES

Available to manufacturers, persons conditioning vegetable seeds, research and development and commercial testing for manufacturers in a qualifying county or in a Community Empowerment Zone.

WASHINGTON STATE B&O TAX EXEMPTION/DEDUCTION FOR FOOD PROCESSING/MANUFACTURING

Available to manufacturers of fresh fruit and vegetables, dairy products, and seafood products.

Expert support for every export need

FOREIGN TRADE ZONE #86

The Port of Tacoma's Foreign Trade Zone #86 gives importers and exporters a flexible way to ship, store, manipulate, and add value to goods while delaying or eliminating payment of U.S. Customs duties. For more information, contact Brook Fitzsimmons at 253.888.4782 or bfitzsimmons@portoftacoma.com.

NW SEAPORT ALLIANCE

The NW Seaport Alliance business team draws on diverse expertise and backgrounds with international experience and is ready to deliver best-in-class service to Port customers. For more information, contact the Northwest Seaport Alliance at 800.657.9808 or info@nwseaportalliance.com.

NORTHWEST TRADE ADJUSTMENT ASSISTANCE CENTER

Sponsored by the U.S. Department of Commerce, NWTAAC provides match-funding to help American companies compete with imports. NWTAAC has matching funds up to \$75,000 for improvement projects, including developing new market strategies, new product development, cutting costs, improving distribution, etc. For more information, contact Joe Meyer at 206.673.4605 or joe@nwtaac.org.

U.S. EXPORT ASSISTANCE CENTER

Sponsored by the U.S. Department of Commerce, this office provides businesses assistance to companies looking to export products internationally. For more information, contact Bob Deane at 206.553.5615 x 225 or bob.deane@trade.gov.

WASHINGTON STATE EXPORT ASSISTANCE

The Department of Commerce offers businesses an experienced trade team that provides a range of support services, including advocacy, consulting, risk mitigation, market research, trade missions and trade show support, business matchmaking and custom programs, all designed to help Washington companies open doors to trade overseas and increase sales.

WORLD TRADE CENTER TACOMA

The World Trade Center Tacoma (WTC Tacoma) can open the world's markets for you and your company. As a member of the World Trade Center's Association, we have direct access to the largest business network in the world and WTC Tacoma is the lone trade service WTC in the Pacific Northwest. For more information, contact Michael Fowler at 206.795.6644 or mfowler@asiaaccess.us.

Where aerospace companies get their wings

REDUCED B&O TAX RATE FOR AEROSPACE

B&O tax rate reduced by 40% for manufacturers of commercial airplanes or component airplanes and aerospace tooling manufacturers. The rate applies to both manufacturing activity and the subsequent sale of the manufacturer product by the manufacturer.

AEROSPACE INDUSTRY B&O TAX CREDIT FOR PREPRODUCTION DEVELOPMENT EXPENDITURES

B&O tax credit for qualified expenditures in research, design and engineering activities related to the development of aerospace products or models by manufacturers of commercial airplanes or component parts of commercial airplanes. The B&O tax credit is equal to 1.5% of qualified pre-production development expenditures.

AEROSPACE INDUSTRY B&O TAX CREDIT FOR PROPERTY TAXES PAID

B&O tax credit equal to the property/leasehold taxes paid on new buildings, the land upon which the new building is located, and property taxes attributable to the renovation or expansion of buildings used exclusively in the manufacturing of commercial airplanes or component parts of commercial airplanes.

AEROSPACE INDUSTRY SALES/USE TAX EXEMPTION FOR COMPUTER HARDWARE, SOFTWARE & PERIPHERALS

Sales/use tax exemption for manufacturers of commercial airplanes or component parts of commercial airplanes for computer hardware, software and computer peripherals used primarily in the development, design and engineering of such products, and charges for the labor and services related to the installation of such equipment.

TAX EXEMPTION FOR CONSTRUCTION OF FACILITIES USED TO MANUFACTURE COMMERCIAL AIRPLANES

Sales/use tax exemption for the construction of new facilities and new parts of facilities that will be used primarily to manufacture commercial airplanes, the fuselages of commercial airplanes, and the wings for commercial airplanes.

STEP PROGRAM GRANT

With business travel and trade shows resuming, businesses who export could receive \$10,000 annually to pay for related expenses through the STEP Program Grant from the Washington State Department of Commerce. Interested applicants can apply for funds on an annual basis to pay for items such as fees to attend trade shows, ship demo products overseas, and more.



The South Sound's Tech Hub

WASHINGTON STATE B&O TAX CREDIT FOR NEW EMPLOYMENT

Washington State provides an opportunity to receive a B&O tax credit of \$3,000 for up to four years to individuals who offer international services. These services include computer, data processing, legal, accounting and tax preparation, engineering, architectural, business consulting, business management, or financial services in specific geographical areas. Eligible activities comprise the creation of a permanent full-time job in international services situated in a Community Empowerment Zone (CEZ) or a designated International Services District.

WASHINGTON STATE SALES & USE TAX INCENTIVE FOR NON-RURAL DATA CENTERS

Business or tenant who meets certain qualifications can apply for a certificate that exempts them from sales and use tax when purchasing eligible server equipment and power infrastructure for the computer data center. The exemption applies to nonrural counties, which are those with a population greater than 800,000 based on the April 1, 2021, office of financial management population estimates. These include King, Pierce, and Snohomish counties. However, if you receive an exemption certificate, you must increase your net employment by at least three family wage employment positions for every 20,000 square feet of newly dedicated server space within six years of receiving the certificate.

SCHOOL OF ENGINEERING & TECHNOLOGY AT UW TACOMA

The School of Engineering & Technology at the University of Washington Tacoma focuses on the rapid development of high-technology academic programs to serve the State of Washington. The school serves as the home for computer science, computer engineering, and information technology programs. Through innovative partnerships with area companies, the school helps students gain practical work experience to meet continually changing industry needs.

EDB TECHNOLOGY CLUSTER ACCELERATION TEAM

Thriving tech clusters play a crucial role in driving innovation, enhancing competitiveness, and boosting economic growth. Areas that have well-established clusters tend to experience increased job opportunities, better salaries, and greater wealth generation. In Pierce County, a collaborative effort between industry leaders, academic institutions, nonprofits, and government entities is underway to transform the region into a technology hub. Initiatives have included raising the regional profile by showcasing tech success stories, hosting the South Sound Tech Conference, and closing the wealth and opportunity gaps in this industry sector. To learn more about the Technology Cluster Acceleration team, contact Tamsin Bell at tamsin@edbtacomapierce.org.



Launch your business in Pierce County

PIERCE COUNTY BUSINESS ACCELERATOR

The Pierce County Business Accelerator will serve entrepreneurs and business owners throughout Pierce County with a focus on BIPOC (Black, Indigenous, and People of Color) veteran, and women-owned businesses to help foster innovation and create wealth-building opportunities. For more information, contact Sara Garner at 253.798.6150 or sara.garner@piercecountywa.gov.

RAIN INCUBATOR

The Incubator is your place for resources and network connections to develop your research, launch your ideas and thrive as a researcher, scientist, or small business. For more information, contact 253.393.9922 info@rainincubator.org.

THE WILLIAM FACTORY SMALL BUSINESS INCUBATOR

Assisting with access to capital, mentoring, workshops, strategy, and connections. Space is limited to receive one-on-one assistance, but workshops are free and open to the public. For more information, contact 253.722.5800.

TACOMA MARITIME INCUBATOR

Tacoma Maritime Innovation Incubator supports up to 7 startup businesses with mentorship and free rent. For more information, contact Karina Martija-Harris at Karina@maritimeblue.org.

SMALL BUSINESS DEVELOPMENT CENTER (SBDC)

Sponsored by Washington State University, the SBDC provides no-fee, confidential, one-on-one counseling to small businesses on all management topics. For more information, contact Ann Zimmerman at 253.332.2411 or ann.zimmerman@wsu.edu.

STARTUP253

Startup253 is a startup resource and networking hub, bringing together entrepreneurial leaders, venture capital and more to advance local startups and place the South Sound at the forefront of innovation and creativity. For more information, contact Ston Nguyen at ston@startup253.com.

VETERANS INCUBATOR FOR BETTER ENTREPRENEURSHIP (VIBE)

The Veterans Incubator for Better Entrepreneurship (VIBE) at the University of Washington Tacoma provides an applied training environment that supports military veterans' entrepreneurial aspirations and promotes their understanding of the modern startup life cycle. Many of its program offerings are free and open to members of the public. For more information, contact Thomas Kuljam at 253.692.5813 or tkuljam@uw.edu.

Funding your business

INDUSTRIAL DEVELOPMENT REVENUE BONDS

Tax-exempt bond financing for employment generating manufacturing facilities is available through the public Economic Development Corporation of Pierce County (EDCPC) staffed by the EDB. Eligible costs include the acquisition of land, new machinery & equipment, construction or renovation of a building, architectural design, engineering work and financing arrangements. No public money backs the bonds. Borrower must be credit-worthy and able to receive financing commitment from a financial institution to back the bonds. Up to \$10 million in bonds can be issued for projects with total capital investment of \$2 million to \$20 million. For more information, contact Tamsin Bell at 253.284.5889 or tamsin@edbtacomapierce.org.

SBA BACKED-LOANS

Start or expand your business with loans guaranteed by the Small Business Administration. Use Lender Match to find lenders that offer loans for your business.

BUSINESS IMPACT NW

Business Impact NW provides coaching, classes, and loans to BIPOC, women, military-connected, immigrant, LGBTQ+, and Latinx entrepreneurs. For more information, contact Christine Buckley at 206.324.4330 ext.119 or christineb@businessimpactnw.org.

CITY OF TACOMA LOAN PROGRAMS

The City of Tacoma offers finance programs to assist Tacoma-based business access capital for land/building, equipment, working capital, with loans ranging in size, rates, and requirements. For more information, contact Deidre Patterson at 253.591.5621 or dpatterson3@cityoftacoma.org

PIERCE COUNTY C-PACER PROGRAM

Commercial property assessed clean energy and resiliency. C-PACER is an innovative financing mechanism to help commercial, industrial, agricultural, and multi-family buildings become more efficient and resilient. The C-PACER program allows owners and developers of eligible properties in Pierce County to obtain long-term financing, at a lower interest rate, for qualifying energy generation, energy efficiency, water conservation or resiliency projects. For more, contact cpacer@piercecountywa.gov.

NATIONAL DEVELOPMENT COUNCIL

The National Development Council (NDC) is a lending program to provide financing to help small businesses grow. Eligible costs include acquisition of commercial land, buildings, site, tenant improvements, purchase of machinery and equipment, working capital, debt restructuring, and soft costs. Loan sizes range from \$100,000 - \$5 million.

South Sound business resources

GOVERNOR'S OFFICE OF REGULATORY INNOVATION & ASSISTANCE (ORIA)

The Office for Regulatory Innovation and Assistance helps businesses navigate Washington's environmental and business regulatory systems and works to improve those systems. For more information, contact 800.917.0043 or help@oria.wa.gov.

TACOMA-PIERCE COUNTY CHAMBER OF COMMERCE

Tacoma-Pierce County Chamber of Commerce is a private, membership-based organization that promotes economic prosperity in the South Sound. For more information, contact Andrea Reay at 253.682.1736 or andrear@tacomachamber.org.

DOWNTOWN TACOMA PARTNERSHIP

Downtown Tacoma Partnership (DTP) provides common services for property owners including security, maintenance, and improvements. For more information, contact David Schroedel at 253.682.1723 or davids@tacomachamber.org.

SPACEWORKS

Spaceworks create and unlock opportunities for creative entrepreneurs and artists by providing space, training, and resources. For more information, contact Michael Liang at 253.627.2175 or michaell@tacomachamber.org.

SOUTH SOUND MANUFACTURING INDUSTRIAL COUNCIL (MIC)

The Manufacturing Industrial Council promotes a positive business climate for manufacturing and related industries. The group is dedicated to safeguarding and improving people's lives, creating a sustainable environment, and providing the jobs that anchor Washington's economy. For more information, contact Ryan Spence at 253.682.1720 or ryans@tacomachamber.org.

TACOMA FIRST 311 NON- EMERGENCY

Tacoma First 311 App enables users to report any non-emergency issues with direct feedback on actions taken or referred. This report rolls up to the City Manager and allows the city to utilize real time data for decision-making and resource allocation. For more information, contact Morgan Medley at MMedley@cityoftacoma.org.

WASHINGTON PROCUREMENT TECHNICAL ASSISTANCE CENTER

Government contracting assistance is available through Washington Procurement Technical Assistance Program (PTAC). Their efforts are designed to assist companies in receiving contracts with federal, state, and local agencies. For more information, contact Trena Payton at 253.964.1745 or tpayton@thurstonedc.com.



BIPOC business WA State programs



WASHINGTON STATE MINORITY BUSINESS DEVELOPMENT CENTER

The MBDA Business Center is operated by the City of Tacoma. The center is part of a national network of funded centers located in major cities throughout the United States. The program's objective is to provide ongoing, quality assistance to minority businesses with rapid growth potential so that they can achieve greater participation in the development of the nation's commerce. For more information, Frank Boykin at 253.591.5239 or fboykin@cityoftacoma.org.

WASHINGTON STATE OFFICE OF MINORITY AND WOMEN'S BUSINESS ENTERPRISES

The Washington State Office of Minority and Women's Business Enterprises (OMWBE) develops programs designed to improve the contributions of minority- and women-owned small businesses to the Washington state economy.

The Office of Minority and Women's Business Enterprises (OMWBE) certifies small businesses owned and controlled by minority, women, and socially and economically disadvantaged persons. OMWBE certifies business in order to increase contracting opportunities for certified businesses with state and local governments.

OMWBE's Directory of Certified Businesses was designed to help buyers and contracting officers more quickly locate certified firms for upcoming procurement and contracting opportunities.

WASHINGTON STATE SMALL BUSINESS RESILIENCY NETWORK

The Washington State Department of Commerce's Small Business Resiliency Network helps small businesses impacted by the COVID-19 pandemic find and apply for resources, access translation services, navigate local, state and federal funding and plan for economic recovery.

BIPOC business local programs

ASIA PACIFIC CULTURAL CENTER

APCC is a 501(c)3 non-profit organization that was formed in November 1996. APCC represents 47 countries and cultures, offering programs and services honoring their distinct artistry, business protocols, history, and social practices.

BIPOC BUSINESS DIRECTORY

Pierce County BIPOC business directory to help people find and support BIPOC-, women- and veteran-owned businesses. Please visit pcbamap.biz.

KOREAN WOMEN'S ASSOCIATION

The Korean Women's Association (KWA) is a registered 501 (c)(3) non-profit organization, providing multi-cultural, multi-lingual human services, regardless of race or ethnic background, to diverse communities through education, socialization, advocacy, and support.

MI CENTRO

Mi Centro is a community-based non-profit that works with Latino and Indigenous Native families. Explore their website and learn more about our educational programs, crisis intervention, family outreach services, Arts & Culture programming, or join our advocacy efforts that address the concerns and opportunities for our families and community.

TACOMA COMMUNITY HOUSE

Tacoma Community House (TCH) is a local non-profit organization that provides programs and services focused on education, employment, immigration, and advocacy to individuals and families.

THE BLACK BUSINESS MARKET

A community market that features a diverse and impressive group of black owned businesses. The TBBM gives black businesses a platform to gain exposure and diversify their clientele. TBBM brings the South Sound area together in the name of celebrating and supporting black business.

THE BLACK COLLECTIVE

The Tacoma-Pierce County Black Collective is a community of Black people dedicated to civic engagement through volunteer service.

THE TACOMA URBAN LEAGUE

The Tacoma Urban League (TUL) has provided critical support and services to the Tacoma-Pierce County community since its founding in 1968. With a mission to empower Black Americans and other disenfranchised groups to enter the economic and social mainstream, the TUL is focused on five key areas—housing, health care, education, employment, and justice.



Talent thrives in Tacoma-Pierce County

CUSTOM WORKFORCE STRATEGY

There are several workforce development, training, and tax incentives available to employers. For a tailored strategy or to request more information, please call the EDB at 253.383.4726.

A SOUND BASE OF MILITARY TALENT

The South Puget Sound hosts two major military installations, Joint Base Lewis-McChord and Naval Base Kitsap, as well as the state headquarters of the Washington National Guard at Camp Murray. These institutions generate a steady stream of veterans, transitioning soldiers and families who bring significant contributions and talent to the region's workforce. To aid the transition into civilian careers, the Service Member for Life Transition Assistance Program (SFL-TAP) offers job fairs, quarterly networking gatherings, employer spotlight events, weekly brown bag information sessions, job posting services and more.

UNIVERSITY OF WASHINGTON TACOMA

UW Tacoma is an urban-serving university, closely linked with the South Puget Sound. The campus impacts and informs economic development through community-engaged students and faculty.

MILGARD SCHOOL OF BUSINESS AT UW TACOMA

The Milgard School of Business at UW Tacoma offers programs of study leading to a Bachelor of Arts in Business Administration, Master of Business Administration, Master of Science in Business Analytics, and Master of Accounting.

SCHOOL OF ENGINEERING & TECHNOLOGY AT UW TACOMA

The School of Engineering & Technology at the University of Washington Tacoma provides focus for the rapid development of high-technology academic programs to serve the State of Washington. The school serves as the home for computer science, computer engineering and information technology programs.

PACIFIC LUTHERAN UNIVERSITY

Pacific Lutheran University (PLU) is a private university offering liberal arts and professional school programs located in Parkland, WA. PLU offers undergraduate and graduate degree programs.

UNIVERSITY OF PUGET SOUND

The University of Puget Sound is a private liberal arts college located in Tacoma's North End offers undergraduate and graduate degree programs.



Talent thrives in Tacoma-Pierce County

BATES TECHNICAL COLLEGE

Bates Technical College is a public technical college located in Tacoma, WA. The college offers two-year Associate of Applied Science degrees, academic certificates, and industry certifications.

CLOVER PARK TECHNICAL COLLEGE

Clover Park Technical College is a public community college located in Lakewood, WA. The college offers more than forty programs in aerospace, advanced manufacturing, health sciences, human services, business, hospitality, science, technology, engineering, transportation, and trades.

PIERCE COLLEGE

Pierce College is a public technical college with campuses in Lakewood, Puyallup, and on Joint Base Lewis-McChord. The college offers four-year and two-year degree programs, academic certificates, and industry certifications.

TACOMA COMMUNITY COLLEGE

Tacoma Community College is a public community college with campuses in the west end of Tacoma and Gig Harbor, WA. The college offers two-year degree programs, academic certificates, and industry certifications.

INVISTA PERFORMANCE SOLUTIONS

Invista Performance Solutions is a collaboration between Washington State's Community and Technical Colleges to provide a single point of contact for organizations to access customized training, coaching and HR consulting services. Their training expertise includes leadership & management, communication skills, core business skills, software & IT training, process improvement and industrial & technical skills. For more information, contact Don Sosnowski at 253.583.8860 or dsosnowski@invistaperforms.org.

SEED INTERNSHIPS

Seed Internships invests in the vibrant future of Pierce County by identifying exceptional college students and recent grads with ties to Tacoma and Pierce County and matching them with top, local employers through internships. Seed's 10-week, paid summer internship is paired with a robust curriculum of professional development – the program provides a tailored path to professional success for homegrown talent and builds a sustainable pipeline of talent for companies seeking to build more representative workplaces. For more information, contact Andrew N. Whitney at 253.359.6289 or andrew.whitney@degreesofchange.org

Federal & State workforce programs

AEROSPACE JOINT APPRENTICESHIP COMMITTEE

The Aerospace Joint Apprenticeship Committee (AJAC) is a non-profit, registered apprenticeship organization serving Washington State aerospace and advanced manufacturing employers. AJAC offers high-growth, high-demand registered pre-apprenticeships, youth apprenticeships and adult apprenticeship program.

CUSTOMIZED TRAINING PROGRAM

Businesses participating in the Customized Training Program receive a state Business and Occupation (B&O) tax credit equal to 50% of the training cost. For more information, please visit contact Don Sosnowski at 970.590.7974 or dsosnowski@investaperforms.org.

FEDERAL WORK OPPORTUNITY TAX CREDIT

The Work Opportunity Tax Credit (WOTC) is a federal tax credit available to employers who hire individuals from eligible target groups with significant barriers to employment. For more information, call 360.902.9326 or ESDGPWOTC@esd.wa.gov.

JOB SKILLS PROGRAM

Businesses participating in the Job Skills Program receive training with a college and provide a dollar-for-dollar match. The businesses contribute at least 50% of training expenses through cash, in-kind payments or a combination of both. For more information, please visit contact Don Sosnowski at 970.590.7974 or dsosnowski@investaperforms.org.

WASHINGTON STATE B&O OR PUBLIC UTILITY TAX (PUT) CREDIT FOR HIRING UNEMPLOYED VETERANS

Businesses that hire unemployed veterans for positions in Washington State may qualify for up to \$1,500 credit against their B&O or public utility tax (PUT). For more information, contact WA State Department of Revenue at 360.705.6214.

WASHINGTON STATE LABOR & INDUSTRIES APPRENTICESHIP

Apprenticeship programs provide a way to train and develop new workers. Registered apprenticeship programs provide both on-the-job training with an employer and classroom instruction that develops highly-trained, knowledgeable, and skilled professionals. For more information, contact 360.902.5320.



Local workforce programs

CITY OF TACOMA NEW JOB CREATION

City of Tacoma provides a tax credit up to \$500 against local B&O tax for every new, permanent, family-wage job a business creates. This five-year tax incentive is designed to stimulate business, reward businesses for creating good-paying jobs, and put citizens to work.

GOODWILL OF THE OLYMPICS & RAINIER REGION

Goodwill helps people with barriers to employment go to work by providing more than 30 training and educational opportunities, each designed to prepare entry into the competitive job world.

HIRE PIERCE COUNTY

A partnership of WorkForce Central, Pierce County Economic Development, and Goodwill of the Olympics and Rainier Region, Hire Pierce County: Next Gen Program provided young adults ages 16-24 years old with work experience through a paid internship program.

JOBS 253

Tacoma Public Schools incoming juniors and seniors have to opportunity to earn high school credit for graduation and the opportunity to gain meaningful work experience. The program provides students with a paid experience that develops leadership skills while benefiting our community in a meaningful way.

K-12 CTE PROGRAMS

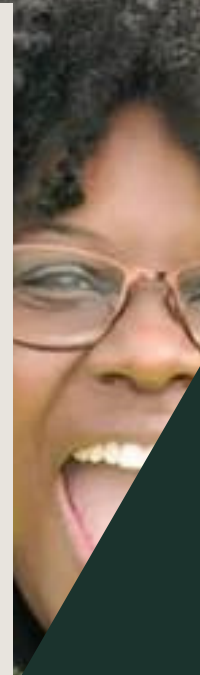
Career & Technical Education (CTE) programs support local middle and high school programs that provide 21st-century, academic and technical skills for all students. Teachers participate in the professional development of curricula and instruction, standards and assessment, and academic integration.

PIERCE COUNTY SKILLS CENTER

The Pierce County Skills Center provides rigorous technical and professional experiences that prepare high school students for high demand, high wage jobs and post-secondary education. Juniors and seniors from 10 Pierce County school districts earn certifications and/or college credit to prepare them for the modern workforce.

WORKFORCE CENTRAL

WorkForce Central provides no-cost services such as: employee recruitment and applicant pre-screening, computerized job matching and referral of quality applicants, electronic job posting and resume banks, help with recruitment and layoffs, customized training packages to upgrade worker skills, information on wages, occupations, and business trends, and access to tax incentives. For more information, contact Samuel Bradshaw at 253.345.9037 or sbradshaw@workforce-central.org.





PORT OF
TACOMA

PLEASE OPERATE
FROM 8AM TO 5PM
DAILY. 2 HOUR PERMIT
FROM 5PM TO 10PM
CALL 206.461.5555
FOR DETAILS AND
PERMIT INFO

